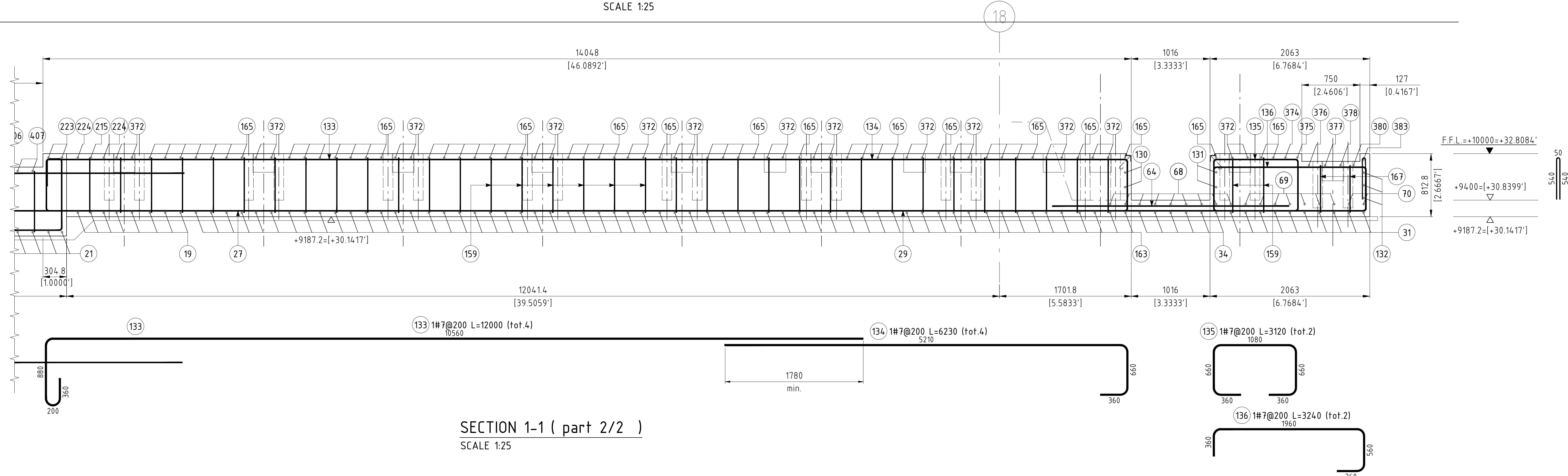
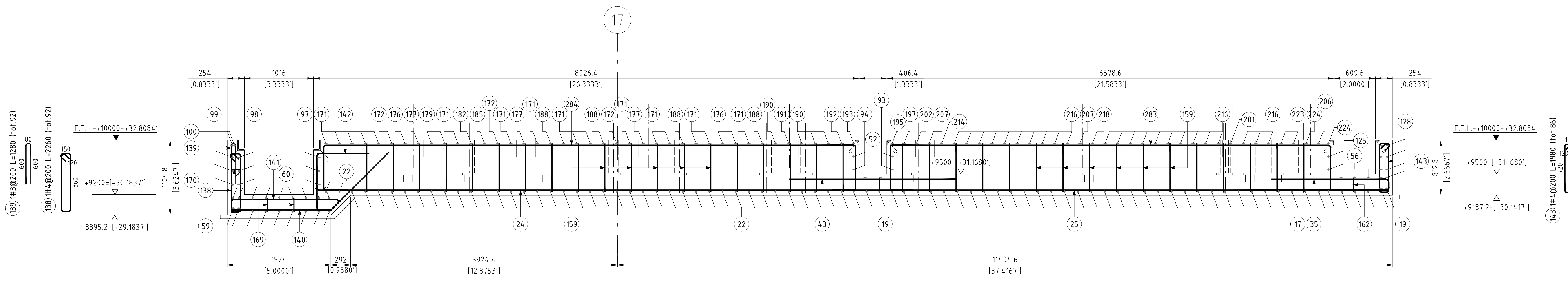


SECTION 1-1 ( part 1/2 )  
SCALE 1:25



SECTION 1-1 ( part 2/2 )  
SCALE 1:25



SECTION 2-2  
SCALE 1:25

NOTES:

- 1- FOR CONCRETE MATERIAL CRITERIA AND REINFORCEMENT, SEE STRUCTURAL STANDARD DRAWING 3400-C-TP-000-0640.
- 2- FOR STRUCTURAL STANDARD ABBREVIATIONS AND DRAWING LIST SEE DRAWING 3400-C-TP-000-0641.
- 3- PILE MATERIAL: ASTM A252 Grade 3 (fy=45 ksi)
- 4- PRIMARY UNITS IN MILLIMETERS, SECONDARY UNITS IN FEET-INCHES.
- 5- WELDING OF THE REBAR TO THE PIPE PILES SHALL BE IN ACCORDANCE WITH AWS D1.4 2011 AND AWS D1.1 2010. THE CONTRACTOR SHALL SUBMIT A WELDING PROCEDURE SPECIFICATION (WPS) AND PROCEDURE QUALIFICATION RECORD (PQR) TO THE ENGINEER OF RECORD IN WRITING FOR APPROVAL, IN ACCORDANCE WITH AWS D1.1 FOURTEEN DAYS PRIOR TO WELDING THE REBAR.
- 6- PILES SHALL BE LOAD TESTED IN ACCORDANCE WITH IBC 2009 SECTION 1810.3.3.1.2.
- 7- THE DESIGN AND INSTALLATION OF THE DEEP FOUNDATION ELEMENTS SHALL BE UNDER THE DIRECT SUPERVISION OF A REGISTERED DESIGN PROFESSIONAL KNOWLEDGEABLE IN THE FIELD OF SOIL MECHANICS AND DEEP FOUNDATIONS WHO SHALL SUBMIT A REPORT TO THE BUILDING OFFICIAL STATING THAT THE ELEMENTS AS INSTALLED SATISFY THE DESIGN CRITERIA.
- 8- BACKING BAR SHALL BE DFP CHILL RING BY FOUNDATION PRODUCTS, LLC OR APPROVED SUBSTITUTE.
- 9- WHERE LOWER PILE END AT SPLICE LOCATION IS DAMAGED DURING THE DRIVING, THE DAMAGED PORTION OF THE PILE SHALL BE REMOVED BEFORE SPLICING THE PIPE PILE.
- 10- CONCRETE SHALL BE CONSIDERED LOW PERMEABILITY CLASS P1 PER ACI318 TABLE 4.2.1
- 11- CLEAR COVER :  
FOUNDATIONS : 2"  
WALLS AND SLABS : 1"  
FOR BEAMS & COLUMNS ABOVE GRADE COVER 1-1/2"  
FOR CONCRETE COLUMNS & WALLS BELOW GRADE COVER - 2"  
FOR SLAB ON GRADE FORMED EDGES COVER - 2"  
FOR SLAB ON GRADE CAST AGAINST EARTH COVER - 3"
- 12- ANCHOR ASSEMBLIES SHALL BE PLACED PRIOR TO POURING THE CONCRETE FOUNDATION

MATERIALS:

|                            |                   |              |
|----------------------------|-------------------|--------------|
| - MUD MATS :               | 1200 psi          | (ACI 318-08) |
| - CONCRETE FOR FOUNDATIONS | 4000 psi          | (ACI 318-08) |
| - CONCRETE FOR ELEVATIONS  | 5000 psi          | (ACI 318-08) |
| - REINFORCING STEEL :      | Gr. 60, fy=60 ksi | (ASTM A615)  |
| - WELDED WIRE FABRIC :     |                   | (ASTM A185)  |

REFERENCE:

- 3410-C-EN-110-0007 : BILLET PREPARATION - FOUNDATION PLAN 5th part - AREA 110  
3410-C-AR-110-0001 : BILLET PREPARATION - FOUNDATION REINF. LAYOUT - AREA 110

ONLY FOR FILE USE

| REV | DESCRIPTION             | DATE     | BY | CHKD | APP'D | DATE |
|-----|-------------------------|----------|----|------|-------|------|
| 1   | ISSUED FOR REVIEW       | 05/26/15 |    |      |       |      |
| 2   | REVISED WHERE INDICATED | 05/08/15 |    |      |       |      |

|          |          |   |                    |              |       |           |     |
|----------|----------|---|--------------------|--------------|-------|-----------|-----|
| DATE     | 05/26/15 | PLANT or GROUP  | BAY CITY           | LINE or USER | INFRA | EQUIPMENT | HRM |
| DESIGNED | EJDD     | CHECKED   |                    |              |       |           |     |
| DRAWN    | EJDD     | APPROVED  |                    |              |       |           |     |
| BY FILE  | EJDD     | PROJECT NUMBER  | BILLET PREPARATION |              |       |           |     |
| BY FILE  | EJDD     | FOUNDATION REINFORCEMENT - PART 5A - SECTIONS sh.1/2 - AREA 110 |                    |              |       |           |     |